



GMT MONTHLY MEMBERSHIP PROGRESS REPORT

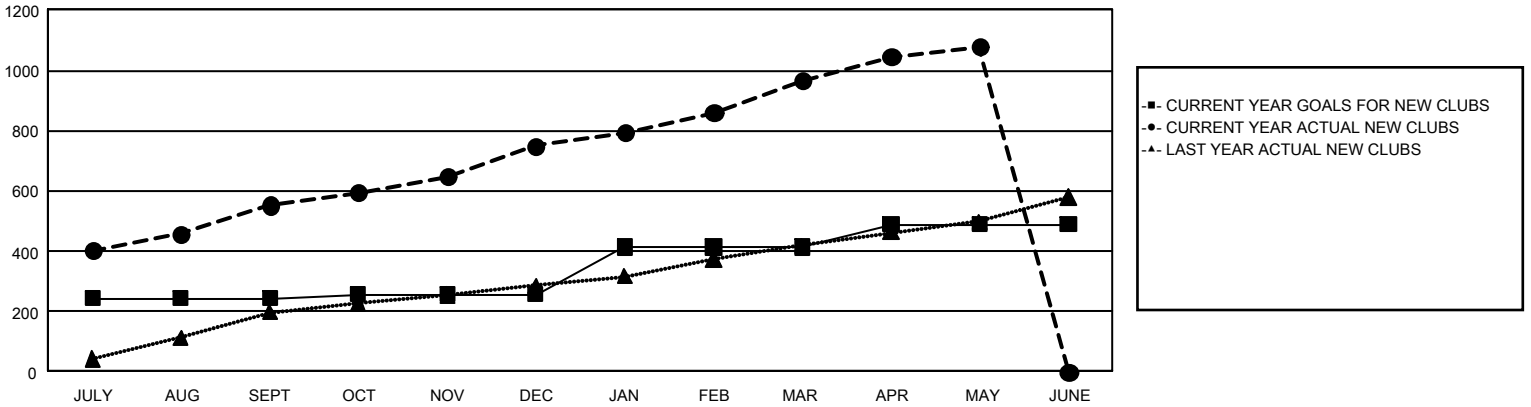
GAT Constitutional Area 6 - India

Results as of: 5/31/2026

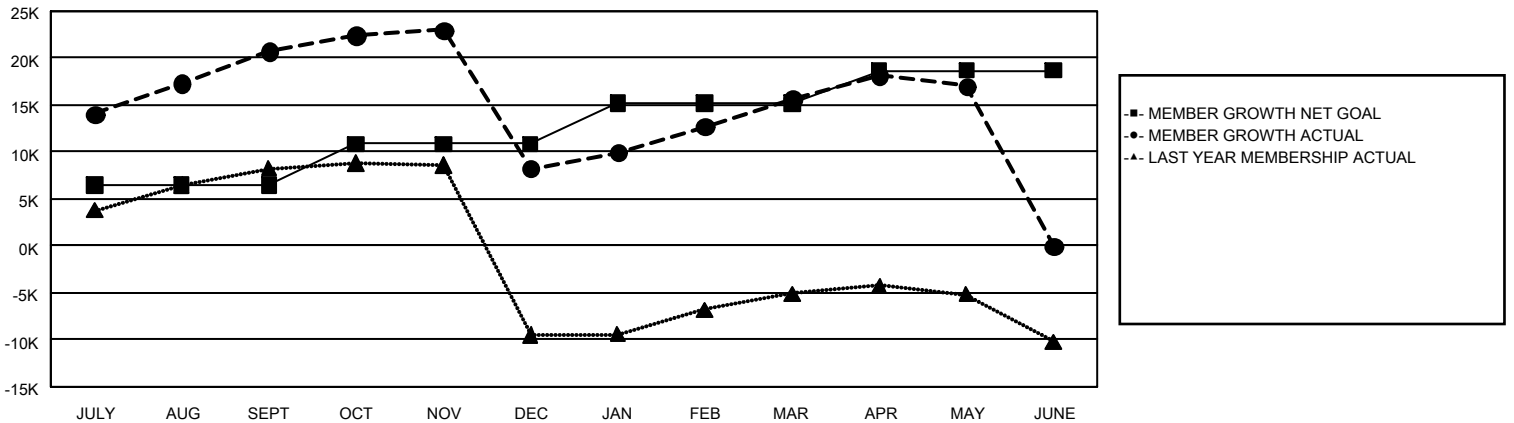
REPORT DOES NOT INCLUDE CLUBS IN UNDISTRICTED AREAS.

Clubs				Members			
RESULTS FOR 2025-2026				RESULTS FOR 2025-2026			
QUARTER	NEW CLUB GOAL	NEW CLUBS	DROPPED CLUBS	QUARTER	MEMBER GROWTH NET GOAL	MEMBER GROWTH ACTUAL	DROPPED MEMBERS ACTUAL (including transfers)
JULY/AUG/SEPT	244	553	106	JULY/AUG/SEPT	6,424	31,466	8,520
OCT/NOV/DEC	12	197	404	OCT/NOV/DEC	4,410	17,654	27,818
JAN/FEB/MAR	157	216	80	JAN/FEB/MAR	4,362	13,952	4,331
APR/MAY/JUNE	76	112	14	APR/MAY/JUNE	3,485	9,288	6,247

GOALS AND ACTUAL NEW CLUBS CUMULATIVE



GOALS AND ACTUAL MEMBERS CUMULATIVE



DROPPED CLUBS: 604	6,651 CLUBS OF 9,612 ADDED 1 OR MORE NEW MEMBERS	GENDER DISTRIBUTION MALE 220,926 (73.31%) FEMALE 80,315 (26.65%)
<u>DROPPED MEMBERS</u> DECEASED 784 CLUB CANCELLED 18,216 OTHER 27,807 <hr/> TOTAL 46,807	CLICK HERE FOR CUMULATIVE MEMBERSHIP DATA	TOTAL FAMILY UNIT MEMBERS 102,562 FAMILY MEMBERS PAYING HALF DUES 60,367